

# FIVE FINGER MAJOR SCALES

---

THEORY WORK SHEETS

BROCK CHART

# FIVE-FINGER MAJOR SCALES

Most popular music is based on Major and Minor triads. This book uses a simpler approach to harmony than other theory books by focusing on Five-Finger Major Scales and sound great in any pop setting using primarily triads.

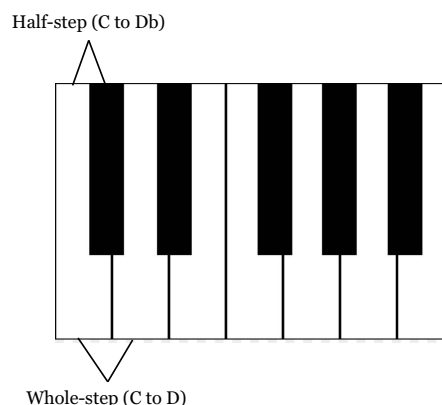
Before diving in, let's look at a few terms we'll be using for this first exercise:

**Interval:** The distance between two notes

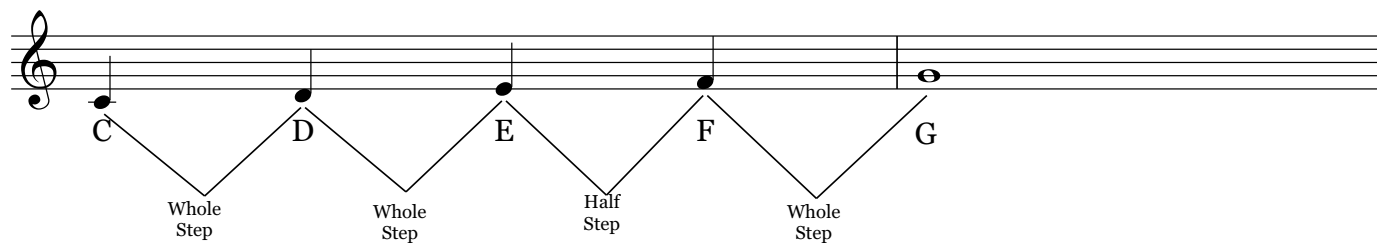
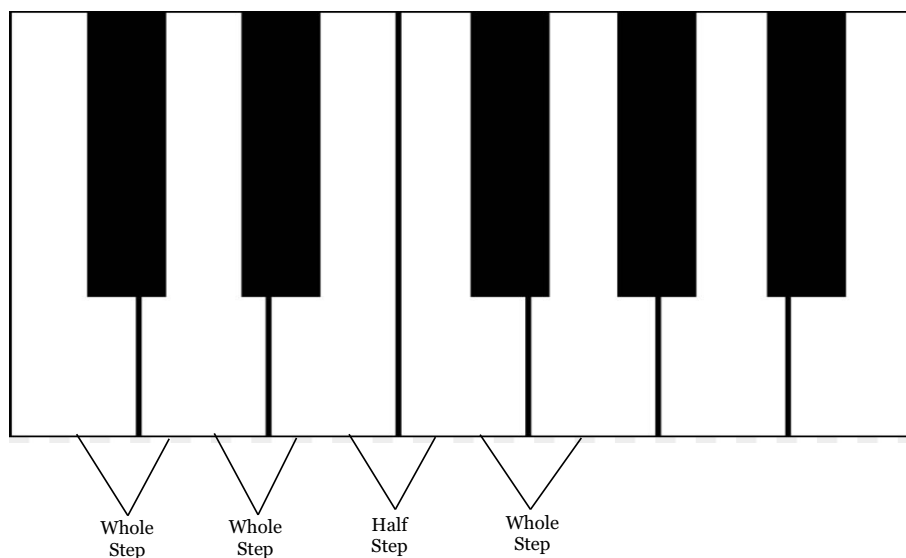
**Half-step:** The smallest interval in Western music. The octave is divided into 12 half-steps or semitones.

**Whole-step:** An interval made of two half-steps.

Major and minor scales are made from combinations of whole-steps and half-steps.



## C Major Five-Finger Scale



# FIVE-FINGER MAJOR SCALES

We can use the same combination of whole-steps and half-steps to construct a Five-Finger Major Scale in any key.

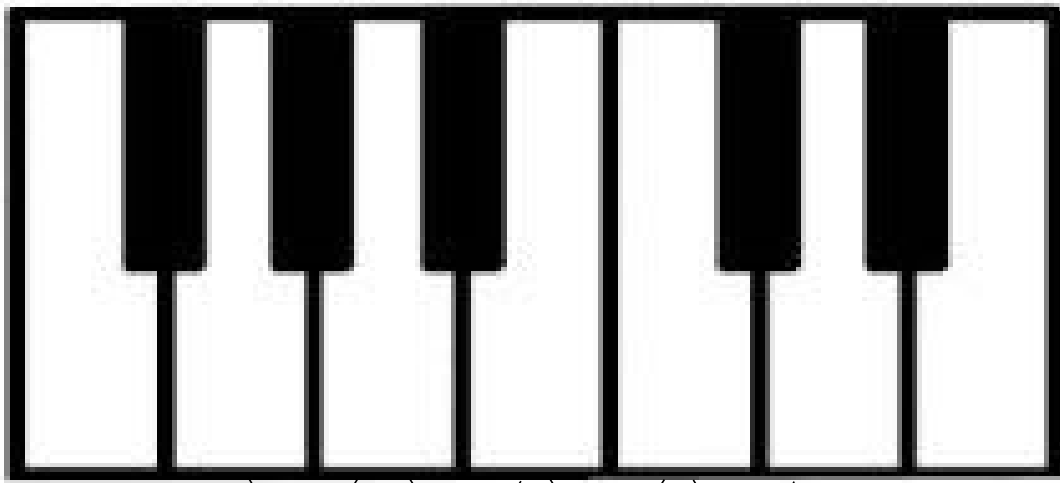
The **Major Scale Formula** is:

**W - W - H - W**

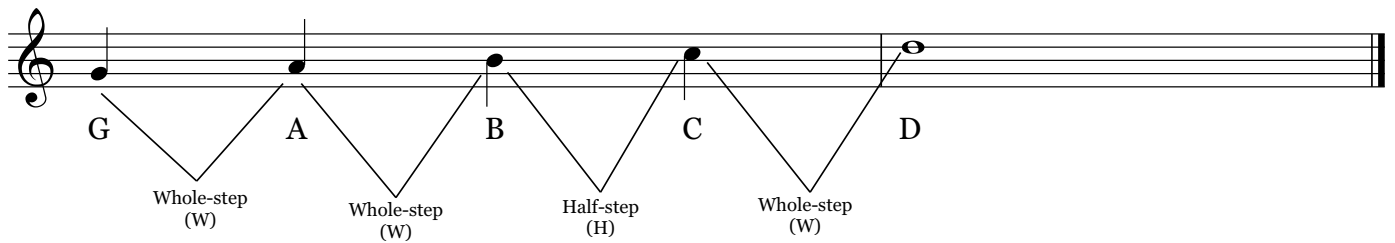
(W = Whole-step, H = Half-step)

Using the **Major Scale Formula** let's build another major Five-Finger Scale:

## G Major Five-Finger Scale



Whole-step (W)    Whole-step (W)    Half-step (H)    Whole-step (W)



Whole-step (W)    Whole-step (W)    Half-step (H)    Whole-step (W)

# FIVE-FINGER MAJOR SCALES PRACTICE

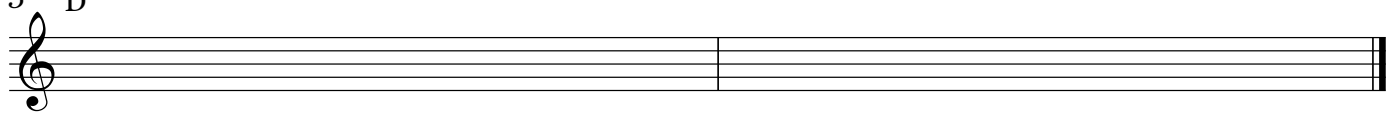
Using the **Major Scale Formula (W - W - H - W )**  
write out Five-Finger Major Scales in quarter notes for the following keys:

F



A musical staff in treble clef with a key signature of one flat (F major). The staff is divided into two measures by a vertical bar line. The first measure contains a treble clef and a flat sign (F) above the first line. The second measure is empty.

3 D




A musical staff in treble clef with a key signature of two sharps (D major). The staff is divided into two measures by a vertical bar line. The first measure contains a treble clef and a sharp sign (D) above the third line. The second measure is empty.

5 B $\flat$



A musical staff in treble clef with a key signature of two flats (B $\flat$  major). The staff is divided into two measures by a vertical bar line. The first measure contains a treble clef and a flat sign (B $\flat$ ) above the fifth line. The second measure is empty.

7 A



A musical staff in treble clef with a key signature of three sharps (A major). The staff is divided into two measures by a vertical bar line. The first measure contains a treble clef and a sharp sign (A) above the seventh line. The second measure is empty.

# FIVE-FINGER MAJOR SCALES

## ANSWERS

Using the **Major Scale Formula (W - W - H - W)**

write out the Five-Finger Major Scales in quarter notes for the following keys:

F



3 D



5 Bb



7 A

